

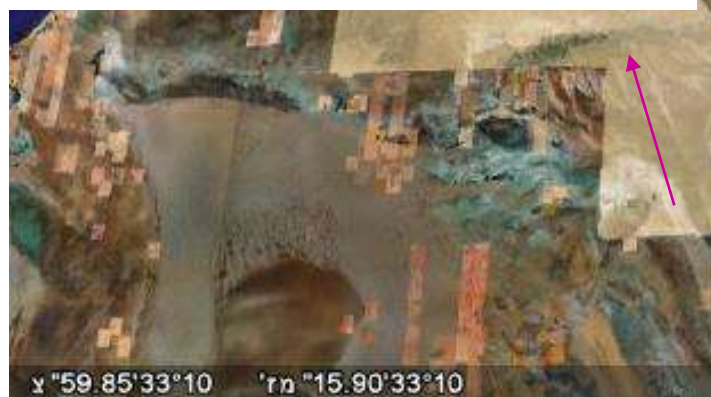
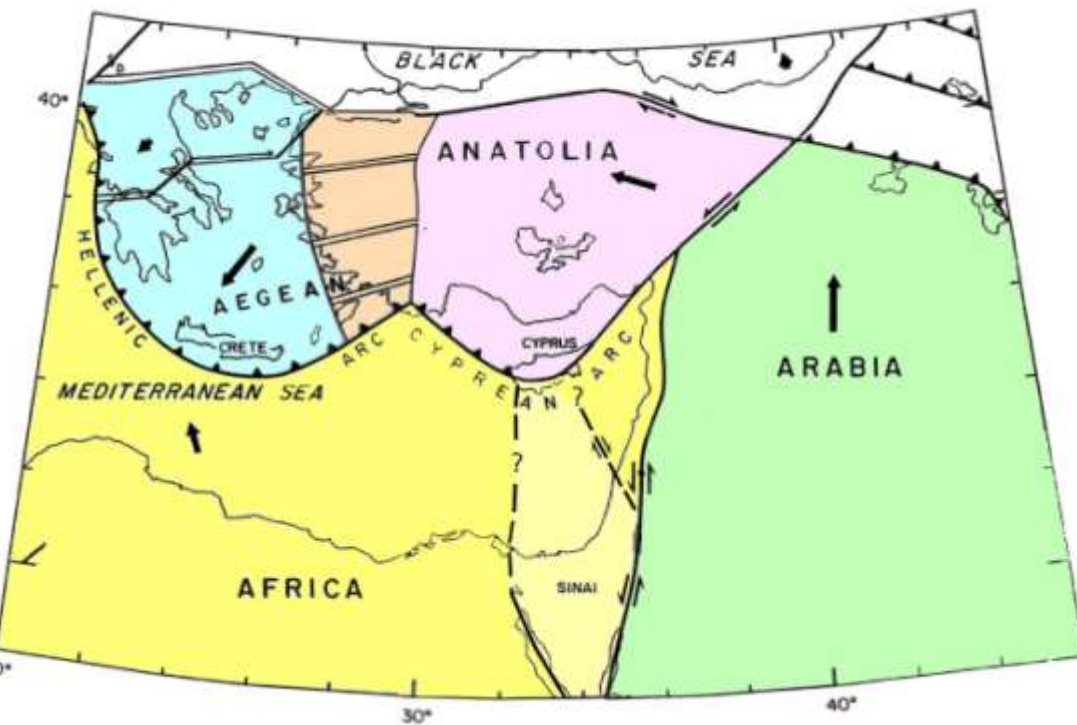


# ***National Steering Committee for Earthquake Preparedness (Israel)***

## **On Earthquakes Preparedness in Israel**

**Dr. Avi Shapira**

**Chairman of the Steering Committee**



**The Dead Sea Fault System**



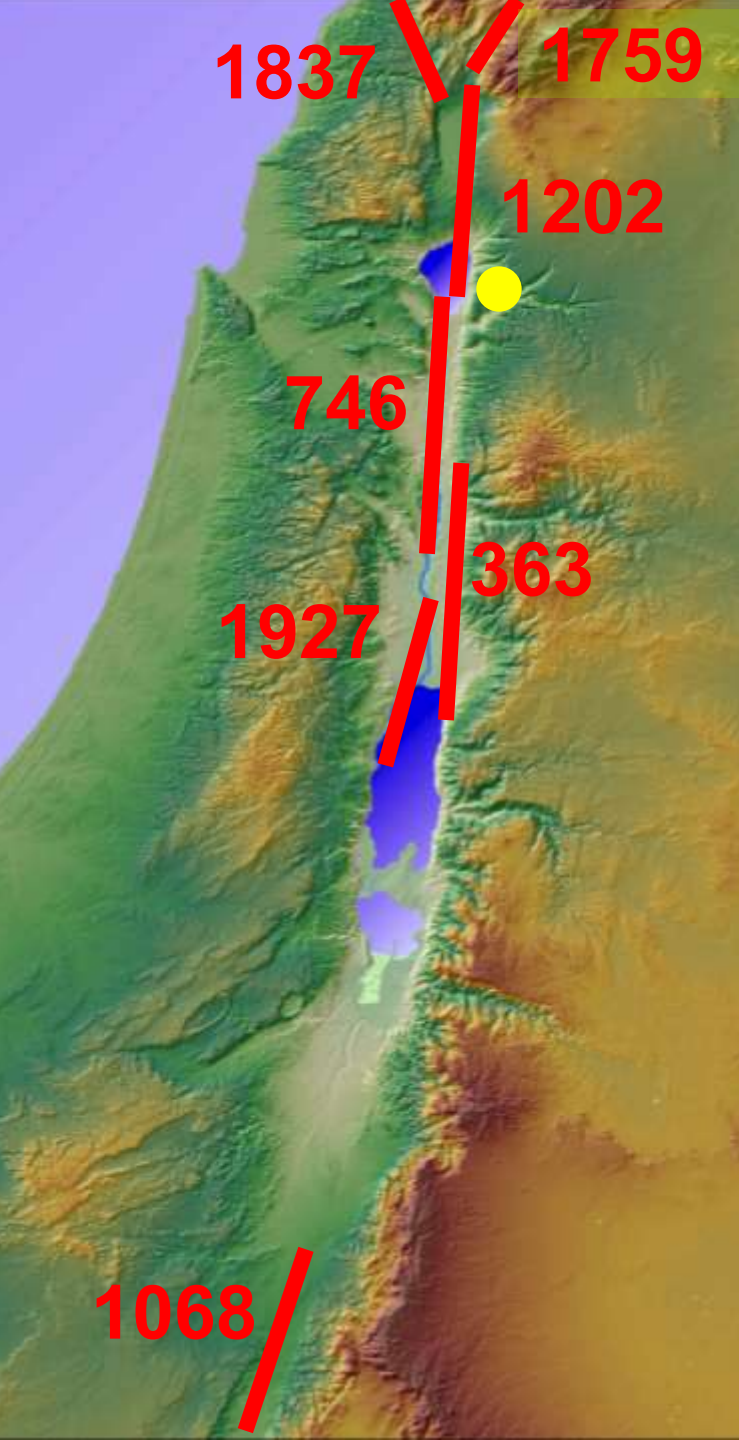


**The fault**

14 m

Meghraoui et al., 2003

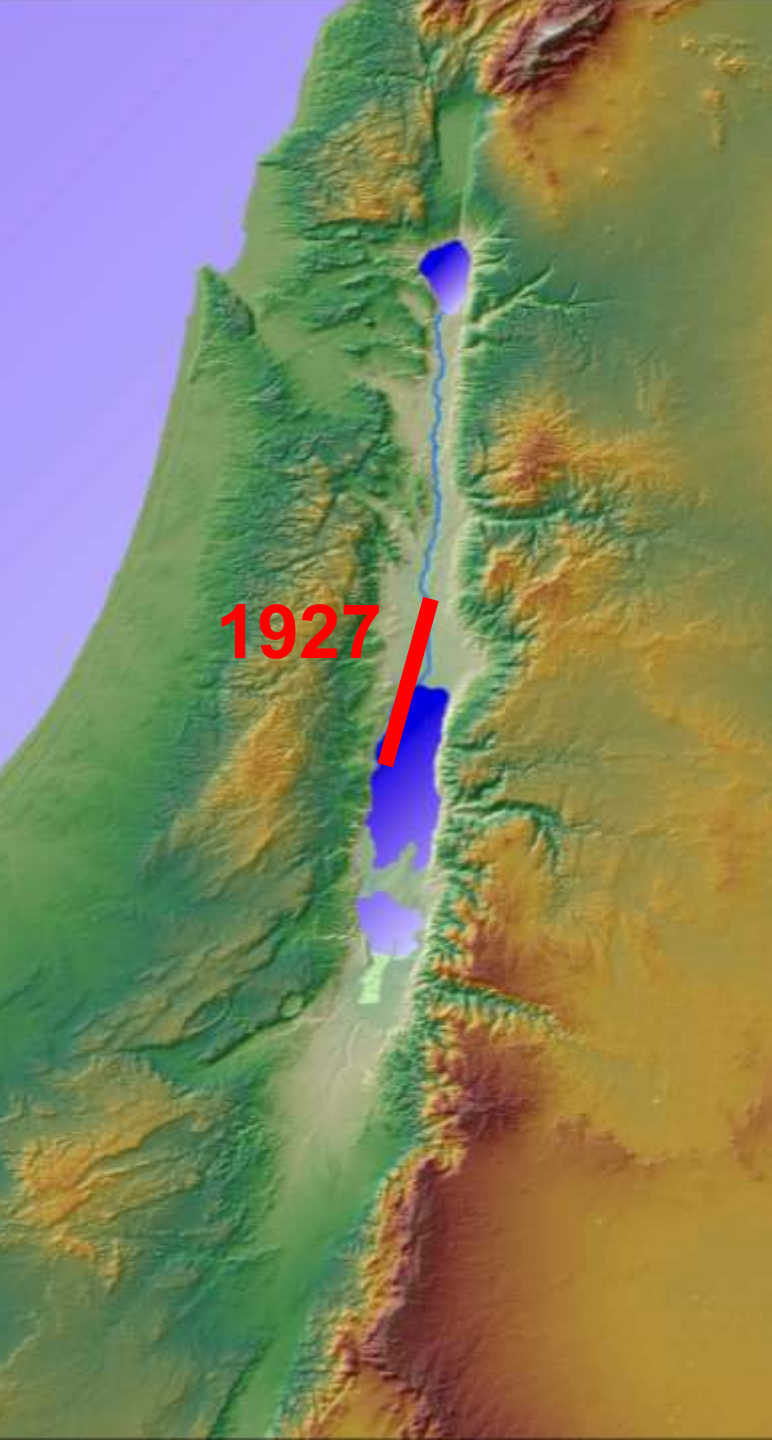










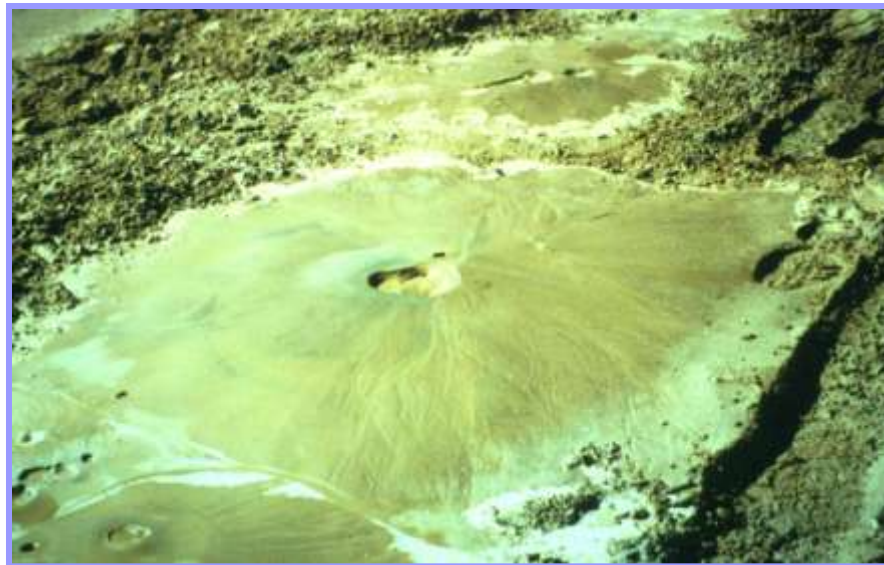


Jericho

Nablus



# Gulf of Aqaba/Eilat , 22 November 1995, Mw=7.2

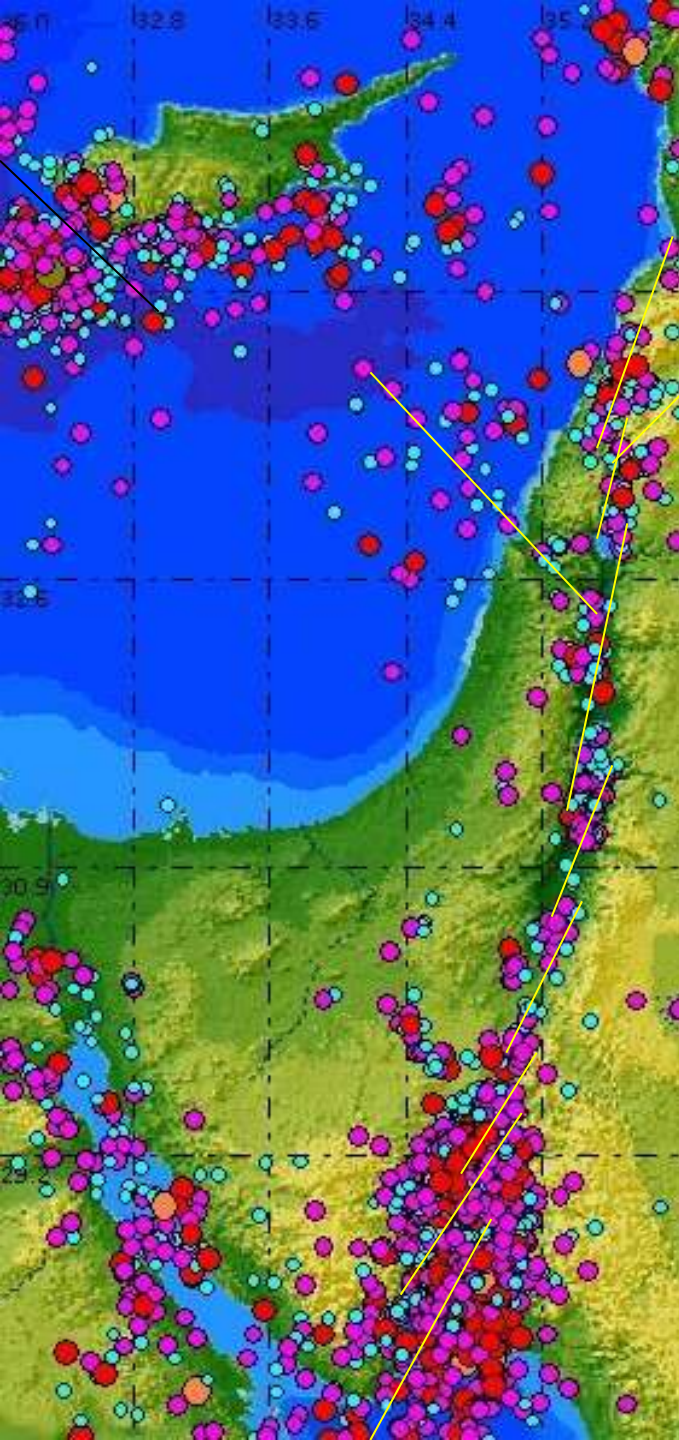




**Ministry of National Infrastructures**  
***Inter-ministerial Steering Committee for***  
***Earthquake Preparedness***

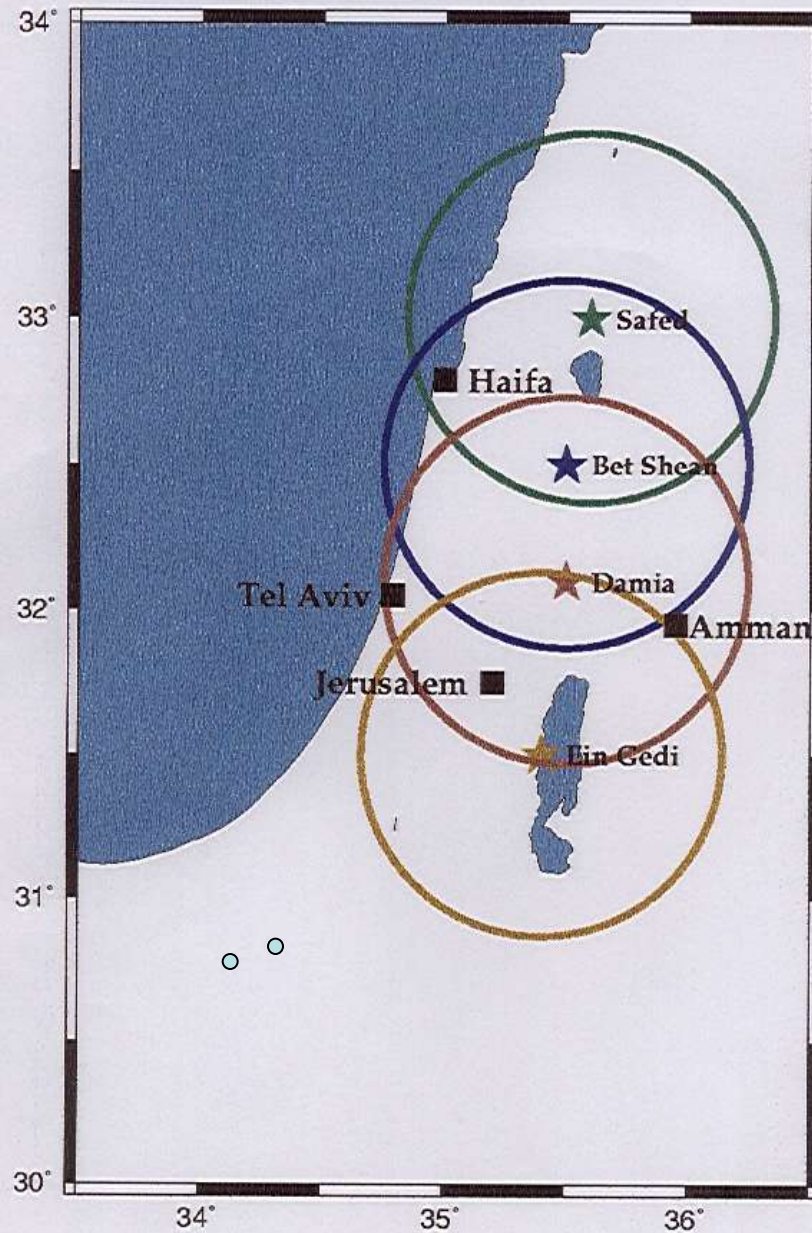


**Earthquake Epicenters  
located by the Israeli Seismic  
Network (1980-2005)**



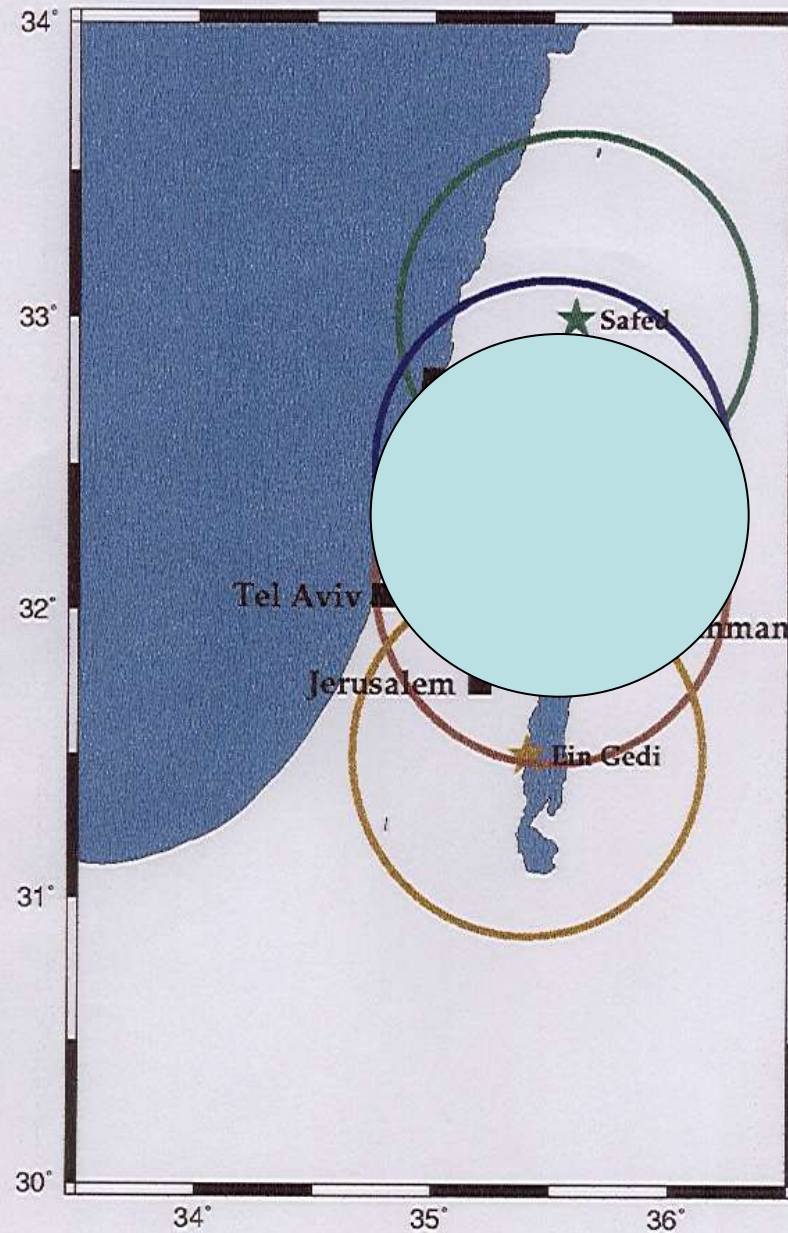


# Radii of 70 km around potential epicenters





# Radii of 70 km around potential epicenters





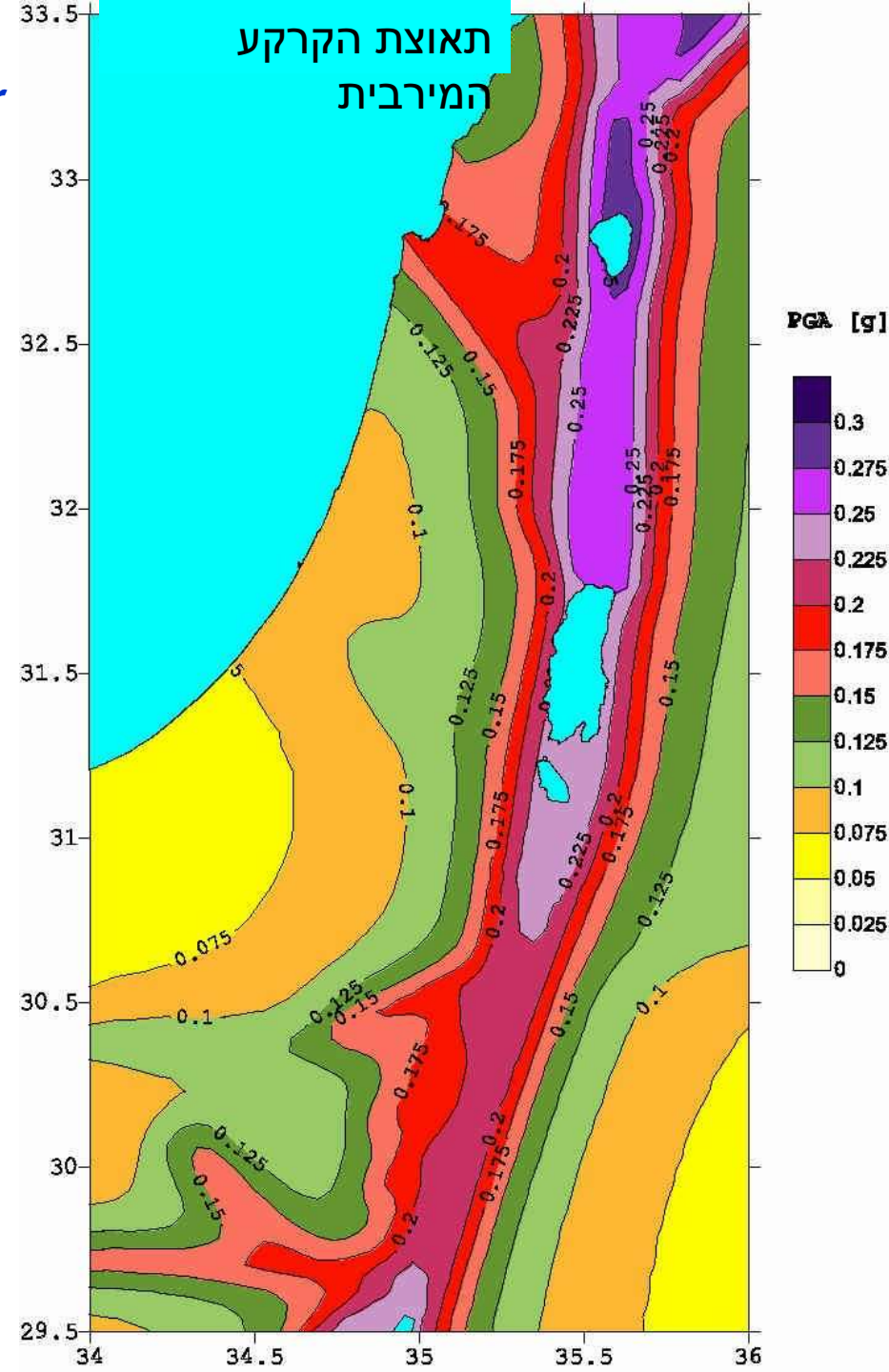
**EARTHQUAKES DO NOT KILL, BUILDINGS DO !**

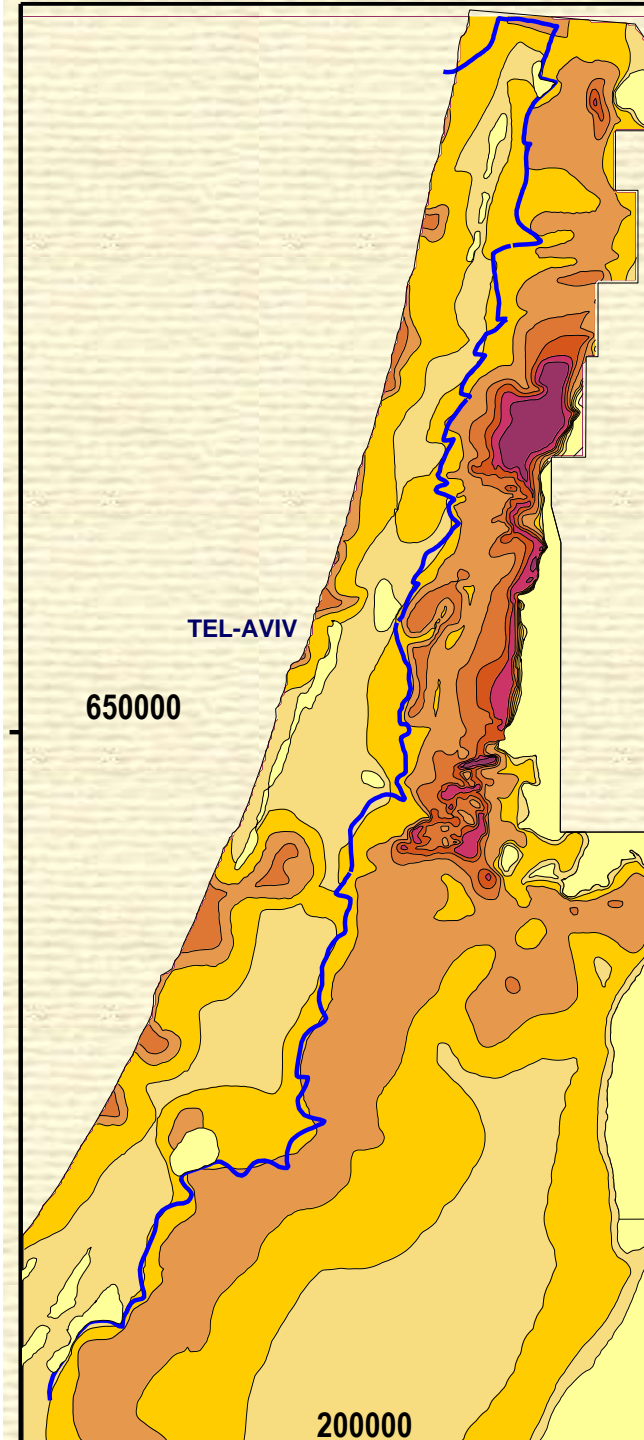




Ministry of National Infrastructures  
*Inter-ministerial Steering Committee for  
Earthquake Preparedness*

**FOCUS ON  
PREVENTION AND  
MITIGATION  
RATHER THAN ON  
RESPONSE**









*National Steering Committee for Earthquake Preparedness  
(Israel)*

- Instructions for land use planning (identification of seismic & geological hazards).
- Regulating Risk Management programs in the industry.



*National Steering Committee for Earthquake Preparedness  
(Israel)*

# **STRENGTHENING EXISTING BUILDINGS**

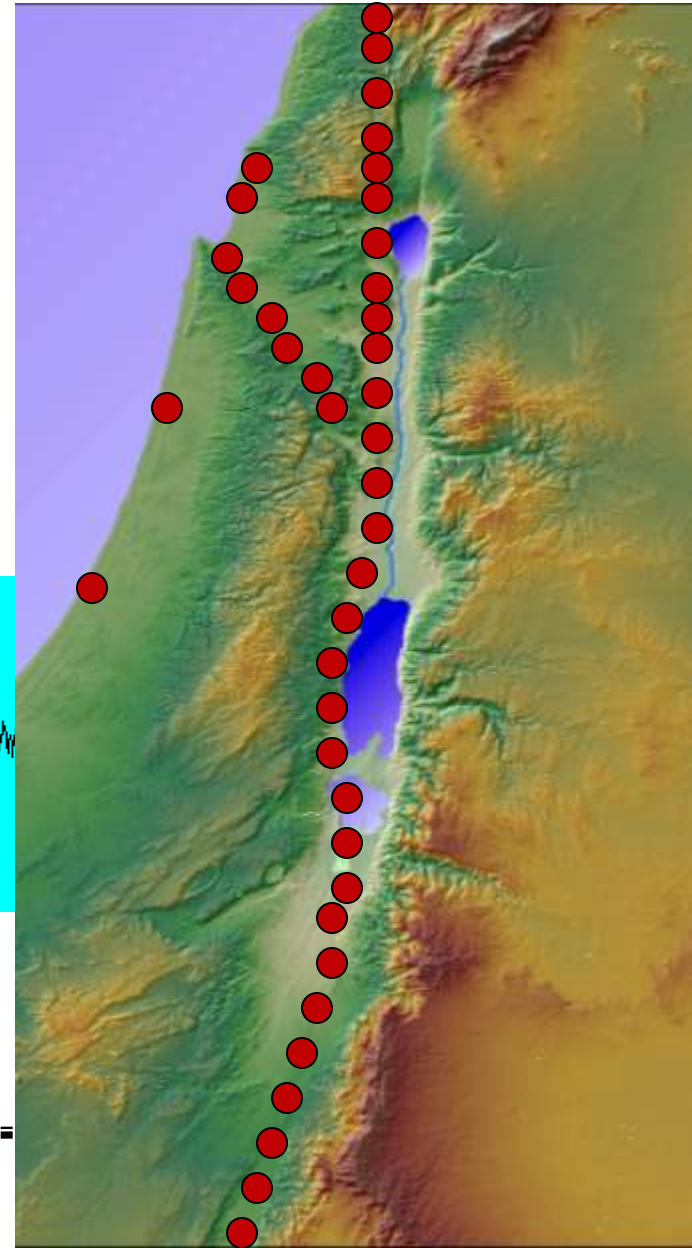
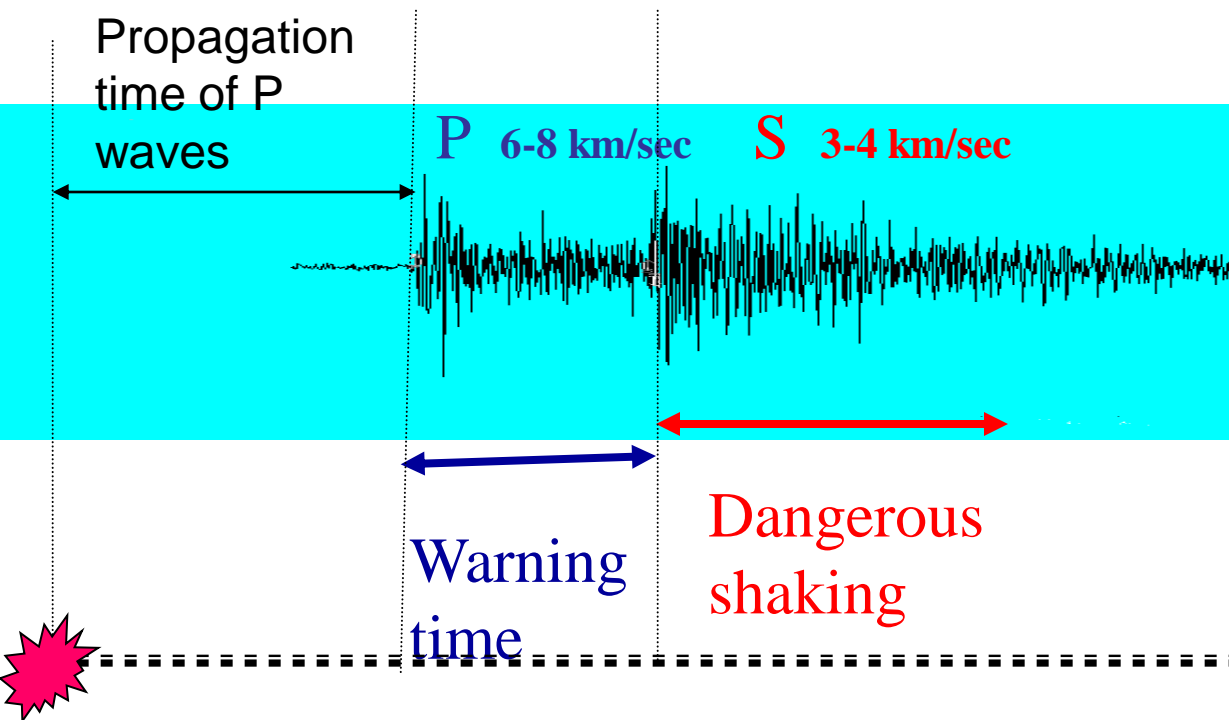
- New technologies.
- Government buildings.
- National Plan for private dwellings.





*National Steering Committee for Earthquake Preparedness  
(Israel)*

# No Prediction but Possible real time warning





*National Steering Committee for Earthquake Preparedness  
(Israel)*

If we do not prepare for  
earthquakes .....

we have to prepare for a  
disaster!





*National Steering Committee for Earthquake Preparedness  
(Israel)*

# Life saving:

- Civil Search and Rescue teams
- Immediate damage assessments.  
(Real Time Earthquake Scenario)



*National Steering Committee for Earthquake Preparedness  
(Israel)*

# Awareness

What to do before, during  
and after.





The prime responders to  
an Earthquake catastrophe  
are the **Local Authority**  
and the **Local Population**

**Jerusalem, July 11, 1927**



**THANK YOU !**